



# SMART FARM & AGRI-ENVIRONMENTAL BIG DATA VALUE

Introducing an innovative, open source, intelligent and multi-technology, fully distributed Agri-Environment Data Space (ADS).

## Smart Farming digital transformation Agri-environmental monitoring

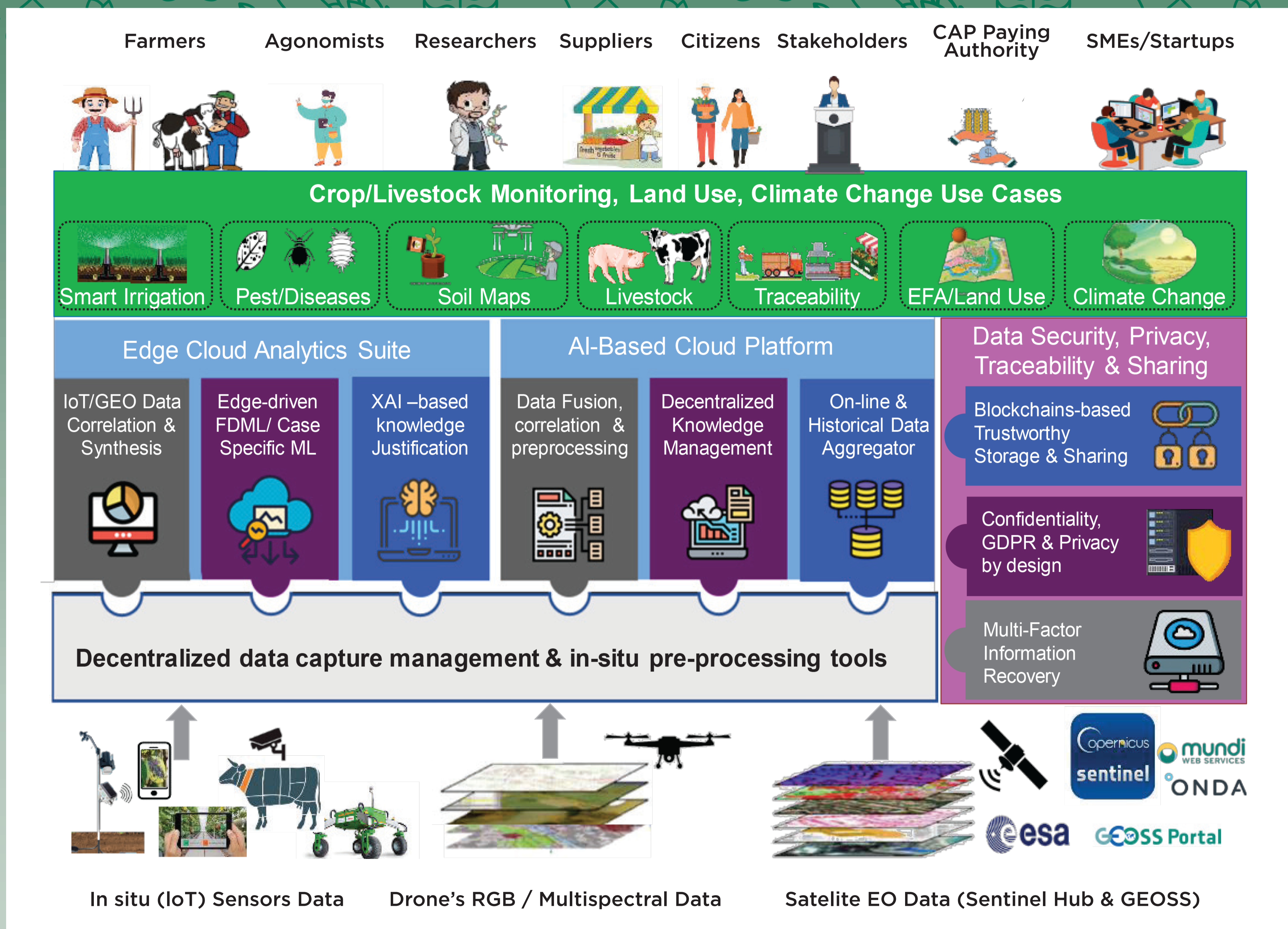
### LEAN MULTI-ACTOR APPROACH (LMAA) AS FOUNDING PILLAR OF AGRIDATAVALUE

<p><b>Multi - Actor Approach Methodology</b></p> <p>By involving multiple actors increase the quality of the results and the adoption probability.</p>		<p><b>Lean Start-up Approach Methodology</b></p> <p>By realizing small circles of development minimize the resources and increase the success probability.</p>
--	--	--

### DEMAND-DRIVEN APPROACH INVOLVING VARIOUS ACTORS:

- Farmers
- Governments and Stakeholders
- Agronomists
- CAP paying authorities, public organizations
- Researchers
- Urban Authorities & Municipalities
- Suppliers
- Regulatory bodies
- Citizens & Civil Society

### FOLLOWING A BOTTOM-UP APPROACH, AGRIDATAVALUE UTILIZES 5 BUILDING BLOCKS:



- Decentralized data capture management & in-situ processing tools
- Edge cloud analytics suite
- AI-Based Cloud Platform
- Data Security, Privacy, Traceability & Sharing
- Crop/Livestock Monitoring, Land Use, Climate Change Use Cases

#### Consortium Partners



**Duration**  
February 2023  
-January 2029

**Project Coordinator**  
Dr. Theodore B. Zahariadis (Synelixis Solutions SA, Greece)  
(zahariad@synelixis.com)



AgriDataValue receives funding from the EU Horizon Europe R&I Programme under Grant Agreement No. 101086461